

# Timespace X200

**TIMESPACE**  
**MOBILE**  
**PORTABLE**  
**AND COVERT**  
**SURVEILLANCE**



The Timespace X200 DVR records video and audio simply and reliably, in a compact package with removable hard disk media.

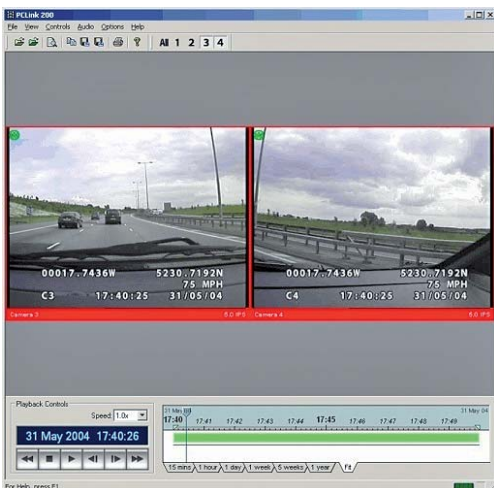


The DVR records up to 16 cameras and 2 audio inputs. External inputs, including GPS position, speed and x, y, z acceleration are easily embedded.

Playback and remote viewing are provided by an optional dedicated monitor or remotely, via Ethernet and RS232.

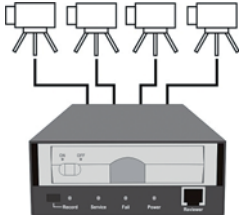
Comprehensive feature set, low power and compact size makes it ideal for mobile and covert use.

- Hot-swappable cartridge system provides easy viewing and archiving
- Single button start/stop recording
- 4 LEDs clearly show DVR status
- Small package, BNC plugs and 12 volt operation makes integration simple
- Removable hard disk media allows offline viewing, via a PC
- Fully supported by Timespace PCLink Suite applications
- Up to 25 frames per second ensures accurate surveillance
- Up to 250Gb hard disk cartridge capacity allows long recording times
- Digitally encrypted watermarking ensures secure audit trail
- Simple intuitive menu system with Help Screens.



## Timespace X200 Digital Recorder

Standalone Recorder



Live View (X201) or with PC monitor



Review recordings directly from a removable cartridge



Wireless download of recordings



### Performance

	X200-04	X200-16
Video recording rate shared, selectable by camera	25 ips PAL, 30 NTSC	25 ips PAL, 30 NTSC
Video inputs	4	16
Audio inputs	2	2
Video Output	1	2
TVL	540	540
Resolution (pixels)	720 x 288 PAL, 720 x 240 NTSC	720 x 288 PAL, 720 x 240 NTSC

### General Features

Single button start/stop recording	Recorder status indicators (4 x LEDs)
Simultaneous record, playback, live view	MPEG format, full image update or conditional refresh
Removable hard disc media	Optional embedded GPS position, speed & acceleration
Normal continuous recording	Alarm event storage
Alarm triggered recording	Simple menu system with help screens
7 day programmable timer recording	Password protected functions
Motion triggered recording	Rewind, replay, stop, play, fast forward and jog functions
Camera number, date and time embedded text	Remote control and download via Ethernet
12 user embedded characters per channel	PCLink Suite live view, review, download & storage
Image search by time/date or by file	

### Security Features

Proprietary video file format	Each image watermarked
Password protection	Embedded Camera No., date and time in each image

### Connections/Interfacing for

	X200-04	X200-16
Camera	BNC Plug	16 on 25-way 'D' connector
Video out	BNC Plug	1 on 25-way 'D' connector
Audio in	Din 5 way	2 on 25-way 'D' connector
Audio out	Din 5 way	2 on 25-way 'D' connector
Timespace X201 reviewer	RJ45	RJ45
LAN/WLAN*/3G*	RJ45	RJ45
GSM*/GPS*/RS232	9-way 'D' connector	9-way 'D' connector
Alarm inputs	4 on screw terminal plug	4 on screw terminal plug
Alarm output	1 on screw terminal plug	1 on screw terminal plug
Power input	2.5 mm DC socket	2.5 mm DC socket
LED Out	2 on screw terminal plug	2 on screw terminal plug

### Physical Characteristics

Enclosure	Grey painted galvanized mild steel
Dimensions (mm)	210 x 112 x 47
IP rating	IP40
Operating temperature range	0-40° C
Humidity (r.h., non-condensing)	80%
Mounting options	Free-standing or screw-mounted
Power supply	12v DC
Continuous power	7.2 W
Maximum current (start-up)	2.8 A
Power up time to recording	<5 secs
Weight	965g (without cartridge)

### Regulatory Approvals

CE Mark	ISO 9001:2000
89/336/EEC Generic	RoSH
95/54/EC Commercial Vehicles	WEEE
Specification 5 UK Home Office	